



**WE ARE
LECI HOLDINGS LTD**
QUALITY ENGINEERING & SAFETY DELIVERED



0----- WHY CHOOSE US -----0

Pricing Commitment

Our Company is committed to placing our Clients' requirements at the center of our Operations, with particular emphasis on cost control, quality and Communication at all stages of the process.

01



In-House

All our workforce is in house and not sourced from outside agencies. We strongly believe our workforce is our best asset and they are encouraged to promote a "can do attitude". We provide skilled staff and Operatives, combined with modern plant and equipment that offer innovative, economic and flexible solutions to complex construction problems.

02

On-Time Delivery

We pride ourselves on delivering Contracts on time and within budget. Our Experienced Management Team will work alongside the Client and their site team at each stage of the project to ensure optimum package delivery.

03





Pre-Contract Advice, Turnkey Design & Build...

We provide pre-contract advice and guidance on budgets, cost options and comparisons as well as proactive input on logistics, programming and value Engineering. We can also provide a turnkey bespoke design and build service for Private Residential Clients.



Groundworks

We are a Specialist Groundworks Company with our core business comprising Excavation works, Foundations, Infrastructure works and Sewers for both Housing Developers and Commercial Clients. We have founded the Company on the core principles of Quality and Safety which contributes to repeated business with our valued Clients.



Concrete Frames and Associated Structures

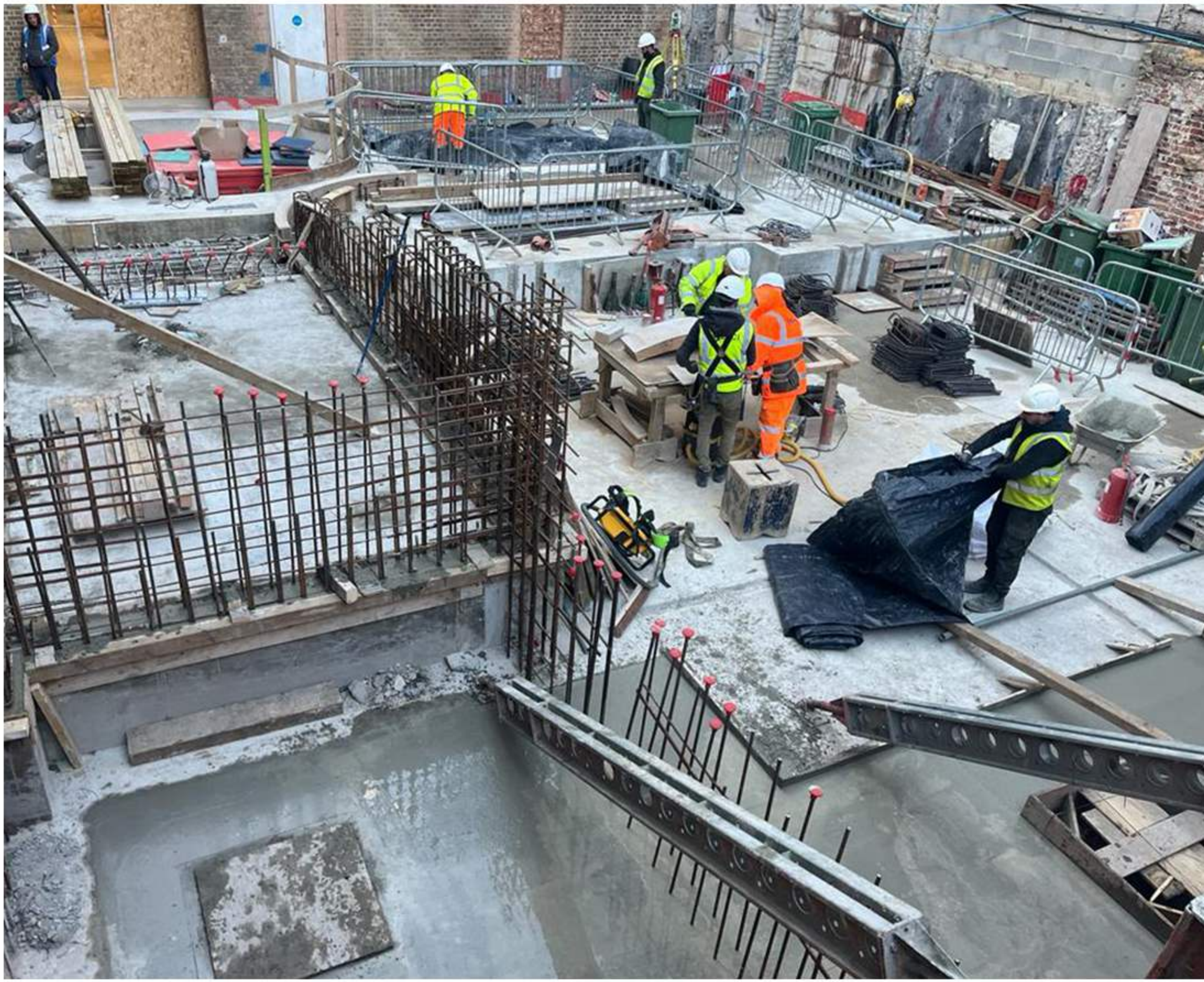
With current trends indicating a preference to build upwards, quickly and cost affectively, LHL provide a comprehensive service based on significant and broad experience in this sector.



Roads and Infrastructures

Leci Holdings Ltd are licensed to carry out Section 278 Works for numerous local authorities and complete bulk excavation, sewer and road construction for both Highways England Adoption and Private Developers.

0----- WHAT WE DO -----0



Basements

With space being at a premium, particularly in Central London, LHL are delivering comprehensive bespoke basement structures for both Commercial and Residential Investors.



Housing & Bespoke Residential Development

The LHL Housing division works directly with one-off private Clients for the development of bespoke properties as well as National Housebuilders, Housing Associations and Local Authorities.

Our experience includes working upon turn-key design and build projects and under contract for Regional and National Developers and Main Contractors.

49 WOODHILL AVENUE, GERRARDS CROSS



Project Value: £480,000
Duration: 20 Weeks

Scope of Works:

- **Groundworks Package:**
 - Site preparation including demolition and removal of existing services
 - Construction of substructure comprising trench fill concrete foundations
 - Brickwork, blockwork, and installation of beam and block flooring
- **Drainage Works:**
 - Installation of stormwater and foul water systems
 - Final connection to Thames Water mains under S106 agreement
- **External Works:**
 - Paving and tarmac surfacing
 - Soft Landscaping
 - S278 works for highway access and improvements

LUXURY HOUSING PROJECT, BIRMINGHAM



Project Value: £650,000
Duration: 20 Weeks

Scope of Works:

- **Groundworks Package:**
 - Construction of substructure comprising RC Basement and concrete foundations
- **Frame/ Super Structure**
 - RC Concrete Decking on steel Floor
 - Casting in Concrete Stairs and Installing Pre-Cast Concrete stairs
- **Drainage Works:**
 - Installation of stormwater and foul water systems
- **Drainage Works:**
 - Soft landscaping and Fencing work

77 GREEN ROAD, BOXMOOR, HEMEL HEMPSTEAD



Project Value: £1,265,000.00
Duration: 48 Weeks

Scope of Works:

- **Groundworks Package:**
 - Site preparation including demolition and removal of existing services
 - Construction of substructure comprising trench fill concrete foundations
 - Brickwork, blockwork, and installation of beam and block flooring
- **Drainage Works:**
 - Installation of stormwater and foul water systems
 - Final connection to Thames Water mains under S106 agreement
- **External Works:**
 - Paving and tarmac surfacing
 - Soft Landscaping
 - S278 works for highway access and improvements

98 PACKHORSE RD, GERRARDS CROSS



Project Value: £680,000
Duration: 28 Weeks

Scope of Works:

- **Groundworks Package:**
 - Site preparation including demolition and removal of existing services
 - Construction of substructure comprising trench fill concrete foundations
 - Brickwork, blockwork, and installation of beam and block flooring
- **Drainage Works:**
 - Installation of stormwater and foul water systems
 - Final connection to Thames Water mains under S106 agreement
- **External Works:**
 - Paving and Tarmac Surfacing
 - Soft Landscaping
 - S278 works for highway access and improvements

49 MARSHAM WAY, GERRARDS CROSS



Project Value: £520,000
Duration: 24 Weeks

Scope of Works:

- **Groundworks Package:**
 - Site preparation including demolition and removal of existing services
 - Construction of substructure comprising trench fill concrete foundations
 - Brickwork, blockwork, and installation of beam and block flooring
- **Drainage Works:**
 - Installation of stormwater and foul water systems
 - Final connection to Thames Water mains under S106 agreement
- **External Works:**
 - Hard Surfacing
 - Soft Landscaping
 - S278 works for highway access and improvements

RESIDENTIAL COMPLEX IN EUROPE



Project Value: €4,599,217.10
Duration: 60Weeks

Scope of Works:

- **Design and Build completely Luxury Residential Complex project at Europe**

CONTACT US

 **01923 510 676**

 **info@leciholdings.com**

OFFICE ADDRESS

45 Circus Road,
St. John's Wood,
London,
NW89JH

Leci Holdings Ltd (Reg. No: 13415145)

OPENING HOURS:

Monday To Friday :
8:00 AM - 6:00 PM

